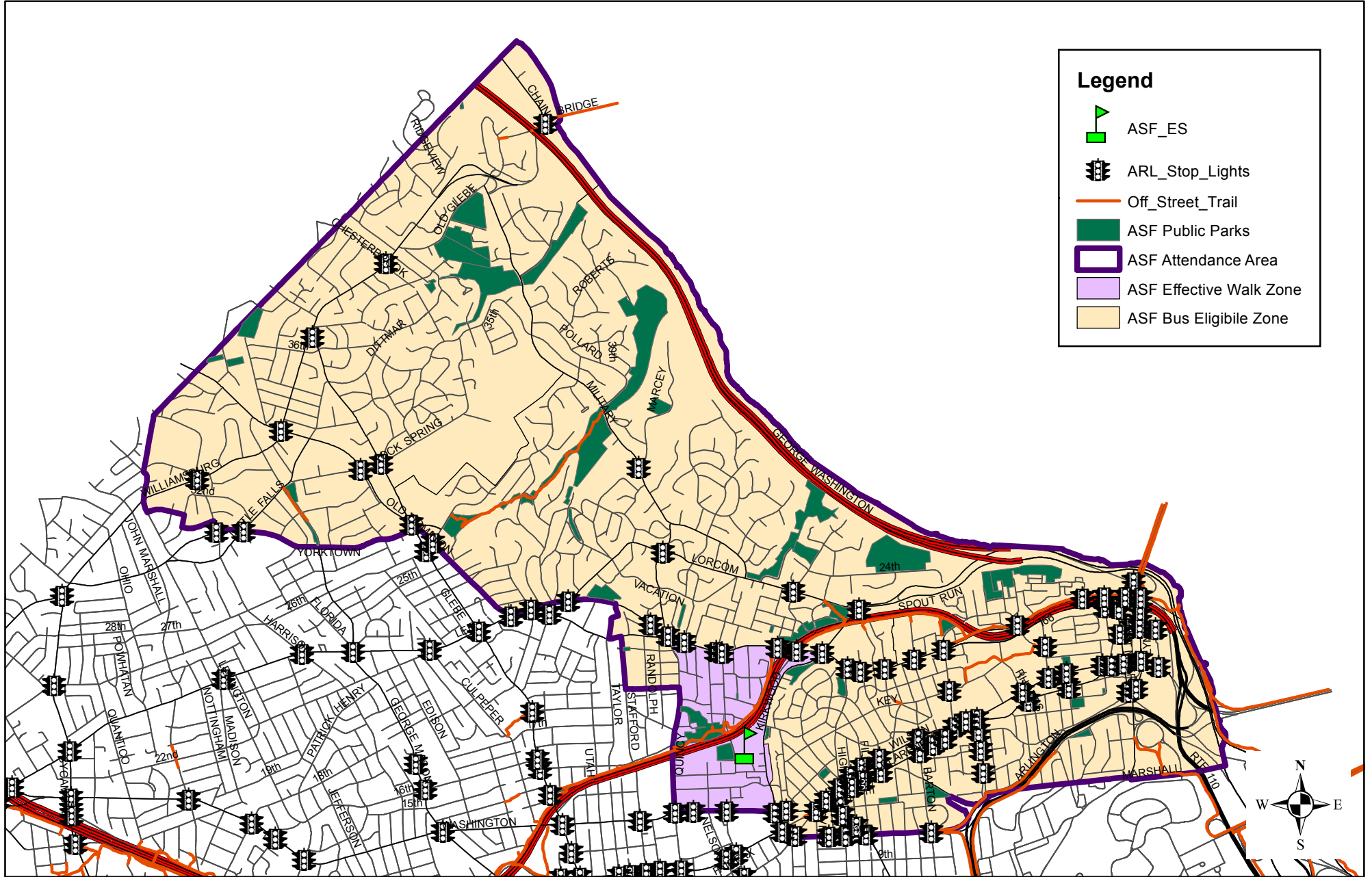




# Multimodal Planning Map for Arlington Science Focus



**Legend**

- ASF\_ES
- ARL\_Stop\_Lights
- Off\_Street\_Trail
- ASF Public Parks
- ASF Attendance Area
- ASF Effective Walk Zone
- ASF Bus Eligible Zone

For more information:  
APS Transportation Department  
Telephone: 703-228-8670  
Email: [transportation@apsva.us](mailto:transportation@apsva.us)

